

# PICASSO

*greenFLEX*<sup>®</sup>  
dolce dormire



**The mattress PICASSO** with a biconical steel springs bonnel is manufactured with a particular system of boxes in Waterlily.



## THE MATTRESS

Picasso with a biconical steel springs bonnel is manufactured with a particular system of boxes in Waterlily. The internal reinforced strap allows to distribute the weight of the body in order to lighten the pressure of the body in the critical points (shoulder, pelvis). The materials are accurately selected and tested and they permit to reach very high quality standards. The right stiffness makes it particularly comfortable giving to those who rest a pleasant feeling.

**Height**  
[ 24 cm, 9<sup>29</sup>/<sub>64</sub>in ]



MADE IN ITALY

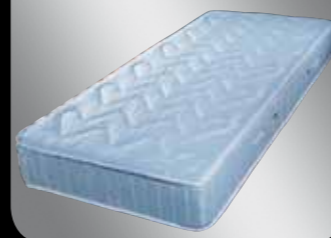
- Super Confort Sistem IGNIFUGO CLASSE 1 IM 4 handles for easy positioning of the mattress
- Lift kg: 0 - 80
- Lift lb: 0 - 176



by Greenflex



**PICASSO,**  
Bonnel  
Super Confort Sistem  
IGNIFUGO CLASSE 1 IM



SPECIFICATIONS



Spring Bonnel  
single 8 x 24



Spring Bonnel  
double 16 x 24



Biconical steel springs -  
thickness wire 2,2 mm, 0<sup>3</sup>/<sub>32</sub>in



Thermal felt of 1,100 gr mq



Perimetrical reinforced Buffer



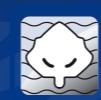
Upper and lower Waterlily  
slab 2 + 2 cm, 0<sup>25</sup>/<sub>32</sub>in + 0<sup>25</sup>/<sub>32</sub>in



Padding lap in soft cotton backing



Textile for reinforcement of the  
internal quilting TNT Antiacarus



External textile cotton

CERTIFICATIONS



**greenFLEX**<sup>®</sup>  
dolce dormire



Air-conditioned



Hypoallergenic



Aerators to facilitate  
the breathability



Orthopaedic structure



Use slat bedsprings

➤ Achievable in any measure.

➤ The pictures are for demonstration purposes. Products are subject to change without notice.

➤ Copyright © Greenflex. All rights reserved.

**greenFLEX**<sup>®</sup>  
dolce dormire



info@greenflex.it  
www.greenflex.it